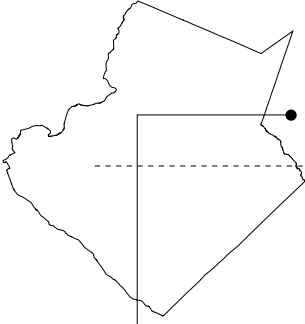




police department annual report **2009**

• **gwinnett**county georgia





• police department

preserve
committed to providing effective
police services to the community
protect defend



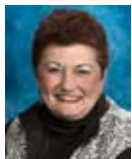
police annual report • 2009

board of commissioners



Charles E. **Bannister**

CHAIRMAN



Shirley Fanning **Lasseter**

DISTRICT 1



Bert **Nasuti**

DISTRICT 2



Mike **Beaudreau**

DISTRICT 3



Kevin **Kenerly**

DISTRICT 4

county administration



Glenn **Stephens**

County Administrator

Glenn Stephens was appointed as County Administrator in September 2009. Jock Connell served as County Administrator until his retirement in December 2009. Michael Comer served as Chief Operating Officer/Deputy County Administrator until his retirement in September 2009.



table of **contents**

from the chief's desk	4
staffing and organization	5
administrative services division	6
office of emergency management	6
fiscal management section	7
personnel services division	11
office of professional standards	12
training section	13
2009 academy class members	14
uniform division	15
special operations section	18
criminal investigations division	25
crime scene investigations unit	27
special investigations section	28
support operations division	31
officer of the year	33
civilian of the year	33
officers/civilians of the month	34
promotions	36
appendix a: gwinnett county precinct map	38
appendix b: uniform statistics	39
appendix c: part I crimes/statistical data	39
appendix d: budget funds	40
appendix e: personnel allocations	40



police annual report • 2009

from the chief's desk



Charles M. Walters
Chief of Police

During 2009, the Gwinnett County Police Department faced many new and unique challenges. The County's growth continued while the entire country faced a financial crisis unprecedented by this generation. Throughout all of this, the Gwinnett County Police Department continued to move forward while looking for new and innovative ways to deal with public safety issues. This included restructuring the department in many areas to more effectively and efficiently serve Gwinnett residents and visitors. With the continued support from the Board of Commissioners, we continued to attract and retain the very best law enforcement personnel available. Despite the economy and budget challenges, we moved forward throughout the year consistently doing an outstanding job of combating the problems that would victimize our residents and communities.

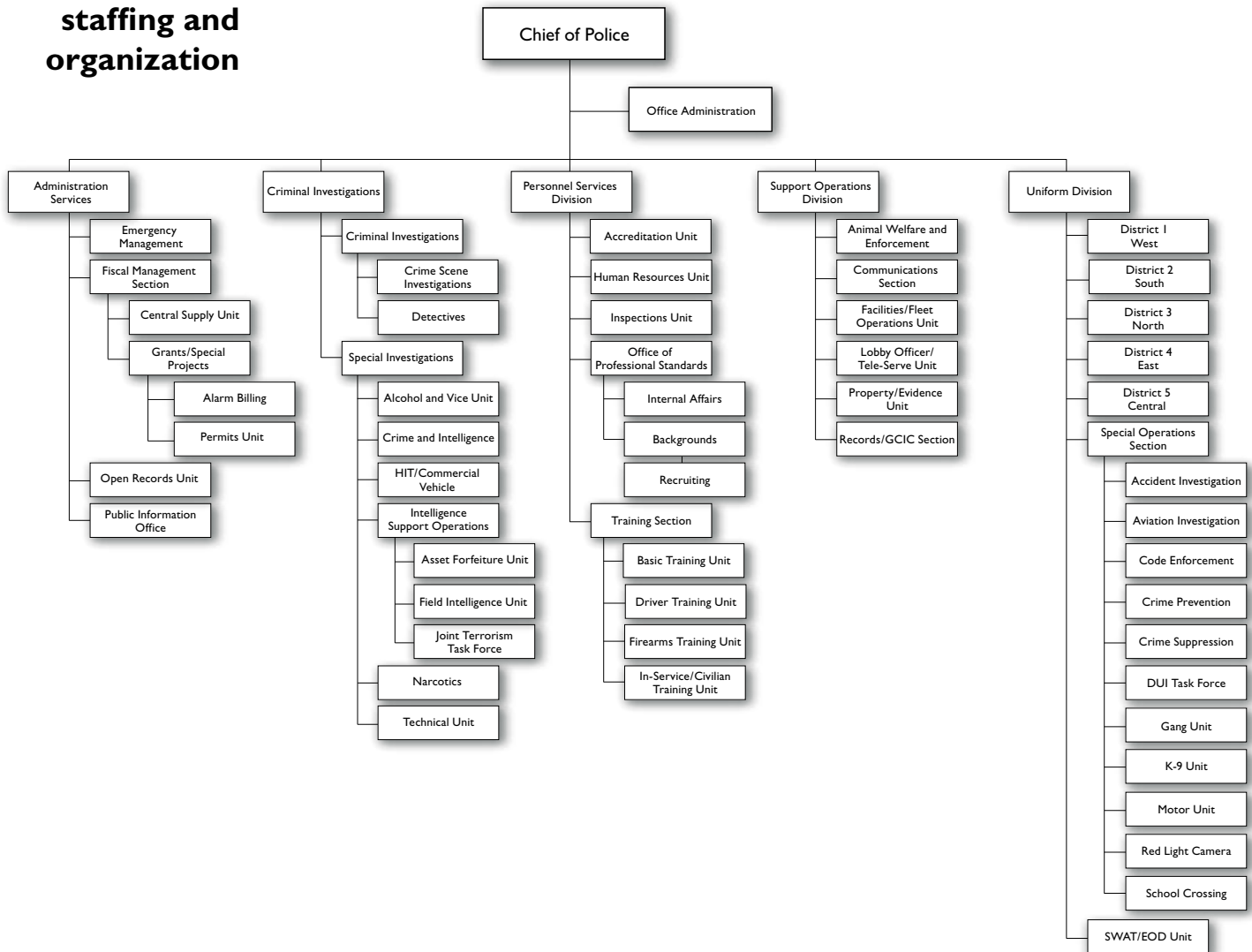
While many of the issues we faced in 2009 will be with us for years to come, I am proud to say that the men and women of our agency will continue to meet every challenge presented with policing a diverse, vibrant, and developing community. As we enter 2010 and the years beyond, the Gwinnett County Police Department will continue to innovate, lead, and effectively use every resource available to keep Gwinnett County safe.

mission

The Gwinnett County Police Department is committed to serving the community through the delivery of professional law enforcement services in an unbiased and compassionate manner in order to protect the lives and property of the citizens and improve the quality of life in our community.



staffing and organization





administrative services division



*Tom Savage
Assistant Chief*

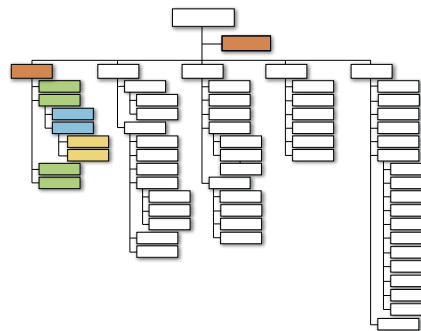


Lt. W. M. Fitzpatrick



*Greg Swanson
Director*

The **Administrative Services Division** aids the Chief of Police in all administrative areas and serves as a liaison to the Gwinnett County Law Department to assist in both internal and external legal matters. The Administrative Services Division consists of the Office of Emergency Management, Public Information Office, Fiscal Management, and Open Records. The Assistant Chief of the Administrative Services Division acts for the Chief of Police in routine matters relating to administrative tasks. Other responsibilities include: maintaining departmental performance measures, accounting for personnel strength, and managing special and short-term projects as directed by the Chief of Police.



Office of Emergency Management

*Lt. W. M. Fitzpatrick
Greg Swanson, Director*

The Office of Homeland Security was established in December 2005. The transfer of the Emergency Management Agency (EMA) from Gwinnett Fire and Emergency Services to the Administrative Services Division of the Gwinnett County Police Department began in spring 2006, and the EMA officially became the responsibility of Police on July 1, 2006. The Office of Homeland Security was removed from the Office of Emergency Management and assigned to the Special Investigations Section of the Police Department in October 2009.

The Office of Emergency Management is responsible for developing plans and procedures to prepare Gwinnett County for both natural and manmade disasters including the potential for severe weather, terrorist activity, and a pandemic influenza outbreak.

Office of Emergency Management Agency – 2009

The **Office of Emergency Management** consists of five full-time employees and two part-time employees. The full-time employees consist of the Director of Emergency Management, a Police Lieutenant, a representative from the Department of Water Resources, one from Fire and Emergency Services, and one staff assistant. The two part-time employees are civilians assigned to assist with projects and training as needed.

The Office of Emergency Management's accomplishments for 2009 include: participation in the metro Atlanta regional evacuation plan and beginning the processes of updating the County's Hazard Mitigation Plan and Continuity of Operations Plan.



In 2009, the Office of Emergency Management completed a total revision of the Emergency Operations Plan. This revision required participation from all County departments as well as the adoption of the plan from all incorporated cities located within Gwinnett County.

The construction of a state-of-the-art Emergency Operations Center (EOC) was completed. The operations center, used to coordinate County response and the use of resources in times of disaster or major incidents, is equipped with over 60 computer work stations and eight team discussion rooms with video and audio conferencing capabilities. One of the main features of the EOC is the high-definition video wall, measuring 12 feet high and 32 feet wide, allowing for vital information regarding an incident to be displayed.

The Office of Emergency Management coordinated the County's membership in the Atlanta Urban Area Strategic Initiative (UASI). The UASI assists member counties and cities with building and sustaining strategies to prevent, protect, respond, and recover from threats of terrorism.

The Office of Emergency Management was also heavily involved in the 2009 H1N1 influenza epidemic. This office, along with other County departments and the East Metro Health District, were instrumental in the development of a strategy for the vaccination of both the citizens of Gwinnett County as well as for County employees.

In 2009, Gwinnett County was affected by the worst flood in 200 years. The Office of Emergency Management opened the EOC, which had the responsibility of coordinating the response to this major disaster. The center was opened for five days in an immediate response. When the initial response phase was over, the Office of Emergency Management coordinated damage assessments. Due to almost \$10 million in damage to County and private properties, a presidential disaster declaration was made. The office then coordinated the placement of a disaster recovery center and worked with FEMA to ensure efficient and effective community outreach.

Fiscal Management Section

Darlesa Barron, Business Manager

During 2009, the **Fiscal Management Section** evolved from the former Business Services Division. This section now provides responsive, comprehensive, and quality services in managing the department budget and other fiscal duties such as procurement and accounts payable, planning and constructing new facilities, facilities management, departmental assets inventory of the fleet, supplies, and equipment, human resources, and technology support services for Police employees, County departments, and the general public.

During 2009, the department completed its construction of a new Police Annex building. Planning for this project began in 2007. This facility now houses a new, state-of-the-art E911 Communications Center along with the intra-jurisdictional Emergency Operations Center. A \$40 million upgrade to a digital communications system was concluded successfully, upgrading the department's ability to effectively, efficiently, and securely communicate with officers on the streets. This initiative also added digital radios to every marked patrol car in the fleet providing officers with a back-up to the duty uniform radio. This project was funded by SPLOST monies.



police annual report • 2009

Fiscal Management

Joyce Martin, Business Officer

Fiscal Management Accomplishments 2009

- Closed out the 2009 fiscal year with a positive balance
- Completed the 2010 operating and capital budgets

2009 Operating Budget <i>(includes General, 911, and SOA Funds)</i>	\$ 92,035,147
---	---------------

2009 – 2014 Capital Improvement Program	
Major Repair/Renovations (2009)	\$79,300
E911 Wireless Phase II Implementation	\$3,000,000
Field Communications Equipment	\$369,217
Field Reporting – Wireless Mobile Interface	\$21,577
Digital Imaging System - CSI	\$25,358
Police Annex	\$6,750,986
Hazard Mitigation Plan	\$29,864,938
CAD / TI Site License	\$160,000
FRED and FRED-C Support	\$43,747

Projects funded by 2001 Sales Tax (SPLOST)	
Police Annex	\$1,277,218
Police Training Center	\$295,357

Projects funded by 2005 Sales Tax (SPLOST)	
800 Mhz Radio System – Digital	\$3,386,635
Police HQ Improvement	\$58,794
Police Annex	\$6,396,703
Police Equipment – Aviation	\$255,357
Animal Control Facility	\$10,520
Evidence Storage Renovation	\$ 11,358

Central Supply Unit

The **Central Supply Unit** accepts delivery of all supplies and equipment to the Police Department and processes all employee requests for office supplies and uniforms. In 2009, this unit processed the delivery of more than 11,550 items and received and distributed more than 3,800 parcels. They processed 547 uniform orders and issued 4,485 uniform items.



Projects/Grants Manager

Marcia Smith

The **Projects/Grants Manager** is responsible for coordinating the development and administration of all grants from all sources such as the COPS Hiring Grants and the Local Law Enforcement Block. This position is also responsible for all contracts relating to Police operations. In addition, the coordinator is responsible for projects assigned by the Chief of Police and/or division director.

Alarm Billing Unit

Ellen Hefner

Gwinnett County requires that alarm systems that are within use on or upon fixed structures and capable of producing an audible signal or communicating with a monitoring station be registered. This includes businesses, churches, residences, apartments, condominiums, or anywhere an alarm system is used to provide security to a structure. Unfortunately, a large number of alarm calls are caused by false alarms. These could be avoided by proper maintenance of alarm systems and a suitable response by the property owner once the alarm has sounded.

A false alarm is defined as any alarm activation that, after a timely investigation of the alarm site, the responding officer determines that no criminal activity or attempted criminal activity has occurred. This does not include alarms caused by violent actions of nature or other extraordinary circumstances not reasonably subject to control by the alarm user or alarm business.

False alarms take up time and energy of emergency personnel who may be needed to respond to a real emergency. To offset the cost to taxpayers caused by police responses to repeat false alarms, the Gwinnett County Police Department established the Alarm Billing Unit. In 2009, Gwinnett County police officers responded to 29,929 alarms of which, 253 were true alarms. This resulted in \$129,175 false alarm fines. In an effort to reduce the number of false alarms and recoup the associated costs, the following fee structure was put into effect:

- First Response: No fine will be imposed
- Second Response: A \$25.00 fee will be charged
- Third Response: A \$50.00 fee will be charged
- Fourth Response: \$100.00 fee and alarm registration is revoked

Permits Unit

Marcia Smith, Coordinator

The **Permits Unit** has a permits supervisor and three permits technicians. This unit performs computer criminal history checks of applicants who need clearance from the Police Department before getting occupational tax certificates and/or permits in Gwinnett County.



police annual report • 2009



The unit prepares and issues permits for owners, managers, and employees of businesses that sell alcoholic beverages, install burglar/security alarms, provide escort and/or dating services, fortune-telling and related practices, and other miscellaneous job applications such as locksmiths, massage therapists, and passenger-carriers.

During 2009, the unit issued 7,470 permits, performed 573 criminal history background checks, fingerprinted 10,852 individuals, and issued 45 denials. The unit also generated \$479,614.25 in revenue.

Open Records Manager

Penny Skamalos

It is the responsibility of the **Open Records Manager** to ensure department compliance with the *Georgia Open Records Act* and to personally receive, respond, and comply with all open records requests. This manager also completes special projects that are assigned by the Chief of Police.

Public Information Office

Corporal David Schiralli and Officer Brian Kelly

The **Public Information Officers (PIO)** serve as the point of contact for news media representatives and assist news personnel in covering routine news stories and more complicated stories such as the scene of a major accident. This requires being available for on-call responses to the news media, preparing and distributing news releases, and arranging news conferences. The PIO must also coordinate and authorize information about victims, witnesses, suspects, and information concerning confidential investigations and operations at the direction of the Chief of Police. The PIO is also responsible for developing procedures for releasing information when other public service agencies are involved.

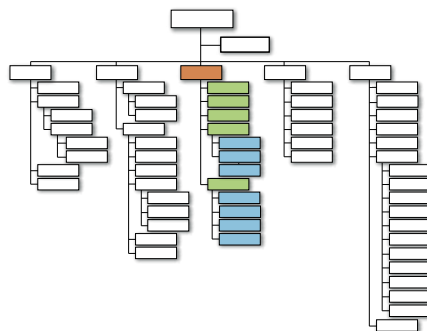


personnel services division



Assistant Chief Joy Parish
Commander

The mission of the **Personnel Services Division** is to promote the recruitment and development of a competent and motivated workforce, provide quality service in personnel administration, and facilitate the delivery of professional police services to the citizens by ensuring compliance with state and national standards and auditing the performance of employees and operations. The Personnel Services Division consists of the following: Accreditation Unit, Human Resources Unit, Inspections Unit, Office of Professional Standards, and Training Section.



Accreditation Unit

Tammy Koonce, Accreditation Manager

The Police Department attained initial accreditation in November 1993 through the Commission on Accreditation for Law Enforcement Agencies (CALEA) and is one of only 600 internationally accredited law enforcement agencies. CALEA's accreditation program aims to improve delivery of law enforcement service by offering a body of standards developed by law enforcement practitioners covering a wide range of up-to-date law enforcement topics. It recognizes professional achievements through an orderly process for addressing and complying with applicable standards.

Managing and maintaining continual compliance with all applicable standards is the primary responsibility of the Accreditation Manager. The department completes an accreditation process every three years to maintain its status as an accredited agency. Successful completion of the program requires commitment from all levels of the organization.

In August 2007, the Gwinnett County Police Department underwent a CALEA reaccreditation onsite. A team of assessors visited the department and examined compliance with CALEA's 464 standards. The department received its reaccreditation in November 2007. The reaccreditation process will start in August 2010.

Human Resources Unit

Laquina Smith, Police HR Supervisor

The **Human Resources Unit** processes payroll, timesheets, position control, and other personnel records for 1,041 police employees. This unit serves as liaison to the County's Departments of Human Resources and Financial Services in such matters as *Family Medical Leave Act* requests, accident/property loss reports, and workers' compensation claims.



Human Resources Accomplishments 2009

- Incorporated 62 new positions
- Conducted training on human resources topics

Human Resources Activity 2009	
Timesheets processed	23,288
Timesheet corrections	3,455
Personnel actions processed	2,894
Workers' Compensation claims processed	145
FMLA requests processed	169
Photo ID cards produced/distributed	241
Employee-involved traffic accidents	330



Lieutenant John Brady

Staff Inspections

Lieutenant John Brady

The **Staff Inspections Unit** works for the Assistant Chief of Personnel Services.

An inspections process is essential for evaluating the quality of the Gwinnett County Police Department's operations. The Staff Inspections Unit ensures department goals are being pursued, identifies the need for additional resources, and confirms that control is maintained throughout the department. The inspections process compares the department's formal expectations with actual performance.

Inspections that are conducted with clear objectives and a positive approach provide a means of communication between all levels of the department. The focus of staff inspections is directed toward policies, procedures, systems, equipment, and only by incidence, on personnel.

The function of an inspection is to provide fact-finding assistance to the commanders of each component within the department. The person conducting the inspection is responsible for providing an inspected components' commander with a systematic, objective review of office facilities, property, equipment, personnel administration, and operational activities outside the normal supervisory and line inspection procedures.

The Office of Professional Standards

Lieutenant Patrick Cronin



Lieutenant Pat Cronin

The **Office of Professional Standards** reports directly to the Personnel Services Division Commander and is responsible for both the investigation of all applicants for positions within the department and the investigations of serious allegations of employee misconduct. These tasks are accomplished by two different units: Background Investigations and Internal Affairs.

Sergeant Joe McMenemy supervises the Background Investigation Unit, composed of six sworn investigators, two civilian investigators, and two staff assistants. This unit is responsible for filling



vacant sworn and non-sworn positions throughout the department and works closely with the County's Department of Human Resources to recruit qualified applicants.

In addition to Sergeant McMenemy, Corporal D. McClure is the police recruiter. His responsibilities include recruiting both sworn and non-sworn personnel, scheduling and attending area job fairs, and responding to employment inquiries. In 2009, the unit attended 54 job fairs at colleges and universities in Atlanta and central and south Georgia, military installations, local churches, and the Georgia Department of Labor. In June 2009, the department was placed under a hiring freeze and the number of job fairs attended reflects that as all 54 fairs were attended from January to June 2009.

In 2009, the department received 4,446 applications for both sworn and non-sworn positions and hired 69 police officers and 28 non-sworn employees.

Sergeant Charles Barnett supervises the Office of Internal Affairs, which consists of three investigators and one staff assistant. This office tracks and maintains records on all department allegations of employee misconduct, use of force, and vehicle pursuits. This office is also responsible for investigating serious allegations of employee misconduct and handles internal investigations for other County departments and city governments upon the direction of the Chief of Police.

In 2009, the Office of Internal Affairs along with department supervisors investigated 294 allegations of misconduct. Of these, 64 percent were allegations found to be true, 11 percent had insufficient evidence to prove or disprove the allegation, 10 percent were baseless allegations, 11 percent were found to have occurred but were lawful, and three percent were administratively closed. Two cases remain open pending the disposition of criminal charges.



Major Brett West
Director

Training Section

Major Brett West, Director

The **Training Section** conducts training for Gwinnett County law enforcement officers as well as officers from other agencies. New Gwinnett officers attend a 760-hour extended Basic Academy course, which is offered multiple times throughout the year. Other basic mandate classes that are taught include an extended Basic Communications course and for the Sheriff's Department, the Basic Jailers course and the 408-hour Basic Law Enforcement Mandate course. The state mandated 20 hours of in-service is also taught to all Gwinnett County Police officers. The Training Section also hosts the nine-week Citizens' Police Academy and offers advanced and supervisory training to all officers throughout the year.

Additional courses include:

- Advanced Criminal Investigative Analysis
- Advanced Crime Scene Processing
- Interviews and Interrogations
- POST Supervision and Management
- POST Instructor



2009 Academy Class Members

76th Academy		
Hector I. Aguilar	Oliver O. Brooks	Brian A. Dorminy
David E. Fikes	Danielle Gardner	Joshua D. Greenley
James A. Harkins Jr.	Matt J. Hassemer	Dereck J. Hecht
Benjamin J. Kerby	Melinda S. Lahr	Jason R. Lennig
Matthew J. Morgenthal	Jares K. Peoples	Raul I. Perez
Andrew S. Richard	Andrew R. Scott	Peter M. Varrone
Stephen P. Villalba	Michael G. Ward	Jason D. Woodard
Justin M. Young		

77th Academy		
Jeremy A. Bailye	Ronnie S. Bazan	Donald E. Braswell
Benjamin Cochran	Naweed H. Dass	Terry A. French
Ryan C. Head	Bradley R. Howard	Jun Jeon
Matthew L. Johnson	Jeffrey A. Maddox	Jameson McClure
Ronald K. Peavy	Timothy J. Prosen	Michael A. Prouty
William P. Scott	Brian Stachowiak	Ronald Tootle
Justin D. Von Behren	Richard J. Warren	Timothy R. Williams
Jayson B. Yarbrough	Dallas C. York	

78th Academy		
Timothy A. Beabout	Aaron M. Caryle	Kevin E. Carpenter
Jose E. Collazo	Mohamed Dakare	Matthew V. Dembowski
Wendy L. Downing	Michael J. Etheridge Jr.	Christopher M. Ford
Mark T. Fritz	Robert N. Fuller	Britt D. Jones
Keith P. Karlsen	Jonathan J. Kelly	Jeffrey R. Klontz
Rodgie C. Leggett	Thomas A. Lepre Jr.	Shea D. Lightfoot
Patrick A. Merriam	Darin J. Mitchem	Brian R. Pierson
Dana O. Pirkle	Nicholas K. Ready	Timothy A. Schaefer
David G. Sikes Jr.	Jason B. Thomas	Fredy Vargas
David M. Villedrouin	Larry D. Williams	



uniform division



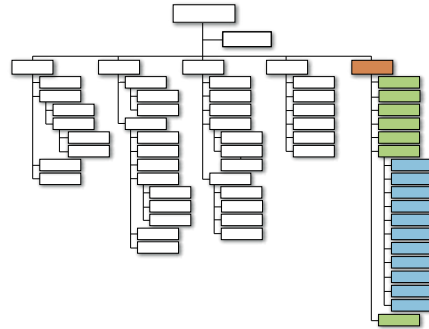
Assistant Chief
A.A. "Butch" Ayers
Commander



Major Dennis Spradley
Commander

The **Uniform Division** is comprised of the patrol function assigned throughout five districts complemented with Special Operations, SWAT, and EOD.

The division's total authorized strength for 2009 was 571 employees.



District I – West Precinct

Major Dennis Spradley, Commander

The **West Precinct** serves Peachtree Corners, Norcross, western Lilburn, and northern Tucker in unincorporated Gwinnett County. This area is culturally diverse and is characterized by light to medium industry and numerous multi-family dwellings.

In 2009, the 92 officers assigned to the West Precinct handled 129,408 general calls for service and 42,869 traffic calls for service for a total of 172,277 calls for service. This accounts for nearly 24 percent of all calls for the entire county, yet geographically, District I only accounts for approximately nine percent of the county's size.

The West Precinct has a four-member Community Response Team that is responsible for responding to emerging crime patterns and for responding to law enforcement related issues and/or concerns that arise within the community.

West Precinct Activity 2009	Number
General and traffic calls	172,277
Citations issued	22,679
Criminal arrests	5,621



Major Mindy Bayreuther
Commander

District 2 – South Precinct

Major Mindy Bayreuther, Commander

The **South Precinct** encompasses approximately 116 square miles. Geographically, it is the second largest of the five districts. The boundaries are Lawrenceville Highway from Harmony Grove Road to the City of Lawrenceville, along Grayson Highway, and to the Walton County line. During 2009, 80 officers were assigned to the precinct. These officers provide police services to unincorporated areas of Tucker, Lilburn, Stone Mountain, Centerville, Snellville, Loganville, and Lawrenceville. They also work with the East Precinct to provide service to the incorporated City of Grayson.

The precinct Community Response Team is supervised by Sergeant R. L. Klok. This unit, working flexible hours, supplements the activities of officers assigned to patrol zones by focusing on specific areas of criminal activity as well as various speeding and traffic related issues throughout the district. During 2009, the responsibility of Quality of Life (QOL) enforcement was directed to the Shift Commanders. These are revitalization projects that are typically limited to specific streets or subdivisions in the district that are not addressed by the department's Code Enforcement Unit. In 2009, the South Precinct handled the second most general calls for service in the department.

South Precinct Activity 2009	Number
General and traffic calls	144,772
Citations issued	17,567
Criminal arrests	2,896



Major Christa Spradley
Commander

District 3 – North Precinct

Major Christa Spradley, Commander

The **North Precinct** serves the cities of Buford, Sugar Hill, and Rest Haven, as well as the unincorporated Suwanee and Lawrenceville areas. The district is made up of light to heavy industry, single- and multi-family residences, the Mall of Georgia, and a small portion of Lake Lanier. New residential construction is continuing at a rapid pace.

One staff assistant and 58 sworn officers staff the North Precinct. One sergeant and four officers are assigned to the Community Response Team and one officer is the Precinct Crime Prevention Officer. The Community Response Team is responsible for addressing specific community problems. They conduct concentrated enforcement efforts to prevent crime and motor vehicle accidents and fatalities in areas where the department has identified an increased level of activity. The Precinct Crime Prevention Officer acts as a liaison between the community and the precinct by addressing residential and commercial crime prevention efforts.

North Precinct Activity 2009	Number
General and traffic calls	81,949
Citations issued	15,566
Criminal arrests	2,377



*Major Tom Doran
Commander*

District 4 – East Precinct

Major Tom Doran, Commander

The **East Precinct**, located at 2273 Alcovy Road, Dacula, provides police services for portions of the unincorporated areas of Auburn, Loganville, Lawrenceville, Suwanee, and both incorporated and unincorporated areas in Dacula and Grayson. The precinct staff consists of 64 uniformed officers including supervisors, five Community Response Team (CRT) members, two Crime Prevention/Community Relations Officers, and one staff assistant.

Although traditionally a rural area of the county, this area has experienced significant business, population, and housing growth, creating an increased need for police services.

Officers in District 4 have made great strides in the community by their participation in Community Oriented Police Services (COPS) communities and attending city council meetings to address citizens concerns. The Community Response Team, through crime analysis and intelligence gathering, targets specific criminal patterns and areas of concern by providing concentrated proactive patrols in these specific pattern areas.

East Precinct Activity 2009	Number
General and traffic calls	114,025
Citations issued	16,399
Criminal arrests	1,547



*Major H. Bart Hulseley
Commander*

District 5 – Central Precinct

Major H. Bart Hulseley, Commander

The **Central Precinct** serves the central part of Gwinnett County. This area includes two of the county's three major malls, Gwinnett Place and Discover Mills. The Gwinnett Arena, Gwinnett Civic Center, Center for Performing Arts, and Hudgens Art Center are also located within the district. The area contains multiple communities including industrial, commercial, multi-family, and residential.

Of the five precincts, District Five has the most traffic calls. This is largely due to I-85, State Route 316, and many feeder roadways. The Central Precinct continues to aggressively enforce traffic laws in an effort to reduce serious injury and fatal accidents.

The Central Precinct houses the precinct officers, a Community Response Team, a Crime Prevention Officer, and some specialized units such as the Crime Prevention Unit and the Crime Suppression Unit.

Central Precinct Activity 2009	Number
General and traffic calls	131,685
Citations issued	22,992
Criminal arrests	4,264



Major T.W. Bardugon
Commander

Special Operations Section

Major T.W. Bardugon, Commander

In 2009, the **Special Operations Section** included the Accident Investigation Unit, DUI Task Force, Motorcycle Unit, K-9, Red Light Camera, Crime Prevention Coordinator, Aviation, Code Enforcement, and School Crossing Guards. Individual unit supervisors report to one of the lieutenants. The Aviation Manager reports directly to the Section Commander.

In an effort to reduce the number of fatal or serious injury motor vehicle accidents that occur in Gwinnett County, the officers assigned to the traffic units continue to focus on the enforcement of speed limits, DUI, aggressive driving offenses, and the various other offenses that routinely contribute to motor vehicle accidents.

Members of these units receive specialized training to help them accomplish their specific missions. The skills they develop allow them to provide high-quality service to the citizens of Gwinnett County and to the members of the Police Department. While assigned regular duties within their respective units, these officers are also frequently called upon to provide support and assistance to other personnel and units within the agency when warranted by an emergency or unusual event.



Accident Investigation Unit

Lieutenant G. Higginbotham
Sergeant C. Hyde, Sergeant W. Barnhart

The **Accident Investigation Unit (AIU)** is primarily responsible for investigating all of the fatal or life-threatening motor vehicle accidents that occur in Gwinnett County. This unit is also responsible for conducting the follow-up investigation of hit-and-run accidents.

In 2009, the Accident Investigation Unit consisted of two sergeants, one corporal, and seven patrol officers. Their normal work schedules include day and evening shifts Monday through Friday. All personnel assigned to AIU are assigned to an on-call schedule to provide coverage for non-duty hours.

In 2009, there were 51 traffic-related deaths in the county. This continues to be a significant decrease over the past several years and from the 53 that occurred in 2008. Additionally, unit investigators were assigned 1,402 hit-and-run collisions for follow-up. Further, as time permitted, these officers conducted traffic enforcement in specific locations where fatal collisions had occurred.



Aviation

Robert Marcus Head, Aviation Manager

In 2009, the **Aviation Unit** was under the command and direction of the Uniform Division Special Operations Section for administrative purposes. The unit operates two MD 500 E helicopters. Along with Manager Head, the unit has one pilot, one corporal pilot, and one part-time pilot/mechanic. This staffing allows the unit to provide coverage for day and evening shifts Tuesday through Saturday. Pilots are on-call for other times.

Additionally, the unit responds to requests for assistance from other law enforcement agencies as well as other divisions of Gwinnett County government. Since 2007, two officers completed and maintained ongoing in-house instruction to become and remain FAA-certified as Rotorcraft/Helicopter pilots. Currently, they are utilized as part-time pilots.

Code Enforcement Unit

Lieutenant C. C. Long

The mission of the **Code Enforcement Unit** is to address issues by taking a proactive approach to enforcing County ordinances, zoning resolutions, sign violations, violations of the *Metropolitan Atlanta River Protection Act*, business licenses, building permits, taxi compliance, graffiti eradication, and other applicable laws in neighborhoods and commercial areas that are experiencing increased crime and deterioration issues.

Many of the issues involving quality of life are usually manifest in areas displaying an accumulation of refuse, junk vehicles, outdoor storage, property maintenance deterioration, and a significant increase in crime. The staff ensures business license compliance and investigates and enforces complaints regarding illegal businesses operating in residential areas. The unit staff regularly removes illegal signs and takes enforcement action against responsible offenders.

The Code Enforcement Unit is under the command of the Special Operations Section of the Uniform Division. It consists of one lieutenant, three civilian code enforcement supervisors, 11 code enforcement officers, and a staff assistant. Staff members regularly conduct neighborhood sweeps based on crime statistics and the number of quality-of-life complaints reported to the department.

2009 Code Enforcement Unit Statistics

In 2009, The Code Enforcement Unit investigated 9,708 complaints, issued 7,335 notices of violation, issued 5,377 citations, impounded 367 vehicles, served 126 arrest warrants, and removed 8,990 illegal signs.



police annual report • 2009

Crime Prevention Unit

Lieutenant C. C. Long
Officer T. Topor, Coordinator

The purpose of the **Crime Prevention Unit** is two-fold: to promote citizen participation in the reduction and prevention of crime through education and active support as well as to provide educational and safety-related programs based on community needs. This is accomplished through the development and presentation of various programs in response to the changing needs of the county as well as maintaining established prevention, safety, and educational programs. The unit works with patrol and investigative personnel to assist with special programs and to address community concerns. The unit is maintained by one coordinator. Each precinct has one officer dedicated to delivery of the Crime Prevention Unit services to and fulfilling its designated purpose with the communities within their assigned precinct. The activities of these officers are coordinated at a departmental level. However, precinct-level staffing allows those charged with Crime Prevention to remain aware of their community needs while being able to directly share cooperative information with precinct-level officers.

Crime Prevention Unit Accomplishments 2009

The unit hosted 186 Community Oriented Police Services (COPS) programs and supervised more than 186 COPS neighborhoods spread out among the five police districts. The goal of COPS is to enhance the quality of community life in Gwinnett County through the establishment of an active partnership between residents and police. Each October, the Crime Prevention Unit hosts an end-of-the-year celebration for the COPS communities at the Gwinnett Civic and Cultural Center. The COPS Festival is a celebration of the partnership between the Gwinnett County Police Department, neighborhoods that participate in the Neighborhood Watch COPS Program, and our community as a whole. This event is open to everyone at no charge. More than 800 visitors attended the festival last year.

The Crime Prevention Unit also hosted a total of 86 programs for the Police Department's Police Explorer Post. In addition to the routine programs, officers are responsible for hosting evening programs when requested by COPS neighborhoods or community groups. Unit officers conducted 11 home and business security surveys, performed 102 Child Safety Seat Inspections at the requests of residents, and presented 221 non-COPS programs reaching a total of 21,301 residents.

Crime Suppression Unit/Gang Unit

Lieutenant J. M. Pearson
Sergeant J. Web Redmond, Sergeant Amanda Cain, Sergeant C. A. Smith
Sergeant L. Bright



The purpose of the **Crime Suppression Unit/Gang Unit** is to investigate all levels of street crime. The unit specializes in identifying criminal street gang members and performs proactive patrols in high crime areas. The unit is an investigative and proactive enforcement team intended to improve the quality of life for Gwinnett County residents. This is accomplished by direct enforcement in high crime areas and areas of known crime patterns and trends.

The Crime Suppression/Gang Unit was implemented and designed to supplement the uniform precincts in proactive patrols in high crime areas. The unit was also designed for the allocation of a team of officers to act in response to any crime patterns and trends without exhausting the resources of the uniform zone officers.



Effective September 19, 2009, the Crime Suppression Unit and Gang Unit became two separate units. The two units still work closely together, and due to this separation, the units' totals for this report have been combined for 2009. The Crime Suppression/Gang Unit handled 16,037 general calls, 372 traffic calls, and 8,776 traffic stops. This proactive enforcement resulted in 434 felony arrests, 1,015 misdemeanor arrests, and the issuance of 5,159 traffic citations. From the merge to the end of 2009, the Gang Unit arrested six wanted persons and recovered three stolen cars and six stolen guns. The Gang Unit handled 232 gang-related calls and 179 gang field contacts. The units assisted all of the precincts and divisions as well as other outside agencies in specific details related to criminal activity and locating wanted persons.

DUI Task Force

*Lieutenant J. M. Pearson
Sergeant Willie Bailey*

The purpose of the **DUI Task Force** is to reduce the occurrences of serious injury or fatal accidents involving drivers under the influence of alcohol or drugs through effective and concentrated enforcement of the state DUI laws. As of the end of 2009, the DUI Task Force consists of one sergeant, one corporal, and five senior police officers.

The DUI Task Force was implemented to deal with the spiraling number of accidents involving impaired drivers. The unit was first created under a state grant received from the Governor's Office of Highway Safety. The unit has since evolved into a full-time unit funded by the general police budget. Officers assigned to this unit are specifically trained in detection and state DUI laws involving impaired drivers. The officers assigned to this unit also conduct safety education programs in all of the county high schools on the dangers of driving while intoxicated.

During 2009, the officers assigned to the DUI Task Force arrested 1,234 drivers for driving under the influence of alcohol or drugs. This represents an average of just over 175 DUI arrests per supervisor and officer assigned to the unit. Additionally, they issued 6,982 citations for other traffic charges of which, 2,388 were speeding. The force conducted 62 safety road checks through 2009 at various locations in Gwinnett County. The DUI Task Force also made 111 felony arrests, 140 misdemeanor arrests, recovered 106 grams of marijuana, and seized \$9,710. The unit has been recognized by Gwinnett civic organizations for their outstanding dedication to aggressively pursuing these dangerous violators.





K-9 Unit

*Lieutenant J. M. Pearson
Sergeant Everett Spellman*

The **K-9 Unit** is comprised of one sergeant, two corporals, and four senior police officers. Working in teams, partnered with highly trained K-9s, these motivated officers provide tracking and search capabilities in support of the Uniform and Criminal Investigations Divisions. They are available to search a variety of terrains and environments for illegal narcotics, property, evidence, and explosives and explosive devices. They are also used to track criminal suspects and missing or disoriented juveniles and adults. All police canines and their handlers undergo strict certification and recertification trials every year. Each officer successfully completed the annual handler recertification training with the North Carolina police Dog Association, and the handlers completed over 663 hours of training in 2009.

In 2009, the K-9 Unit was directly responsible for 31 patrol arrests and 42 arrests for illegal narcotics. Working in conjunction with other entities from within the department, the K-9 Unit aided in the seizure of illegal narcotics with an estimated street value of more than \$327,237. Aside from activities associated with these seizures, the K-9 Unit aided the Uniform Division by responding to 508 calls for service. The unit generated a total of 5,729 community/officer contacts and logged more than 8,400 working hours.



Motor Unit

*Lieutenant G. Higginbotham
Sergeant Alan Hutcherson*

In 2009, the **Motor Unit** was comprised of one sergeant, two corporals, and five patrol officers. These officers are assigned to a 6:30am to 3:00pm schedule, Monday through Friday.

The mission of this unit is to reduce the number of motor vehicle accidents that occur in Gwinnett County through the concentrated and strict enforcement of traffic law.

In 2009, the personnel assigned to the Motor Unit participated in nine traffic-related educational programs that primarily addressed teen drivers and the Governor's Office of Highway Safety 100 Days of Summer HEAT enforcement efforts. In addition, the officers assigned to the Motor Unit issued 18,807 traffic citations and handled 402 traffic-related calls and 192 general calls.

In addition to traffic enforcement, the Motor Unit participated in traffic control details, funeral escorts, and assisted Accident Investigation Unit personnel with onsite investigations.



Red Light Enforcement Unit

Lieutenant G. Higginbotham

Officer S. D. Martin

The **Red Light Camera Enforcement Unit** is designed to decrease the number of accidents that occur at intersections by red light violators. The unit accomplishes this through the use of specially designed camera systems that have been installed at various intersections in Gwinnett County. In 2009, those locations included Jimmy Carter Boulevard at Singleton Road, Mall of Georgia Boulevard at State Highway 20 and Steve Reynolds at Beaver Run Road. The unit is staffed by one sworn police officer who is responsible for reviewing each captured image to ensure that a violation actually occurred and issuing citations to the registered owners of the vehicles captured in the image. Personnel assigned to the unit are also responsible for reviewing any affidavit filed with Recorder's Court and re-issuing citations based on the information provided. In 2009, the Red Light Camera Enforcement Unit reviewed 9,687 potential red light violations and issued 7,869 citations.

School Crossing Guards

Lieutenant G. M. Higginbotham

The **Special Operations Section** is also responsible for the operation and management of the School Crossing Guard program. The three civilian supervisors and 17 school crossing guards that staff this unit report to a lieutenant and are responsible for the safety of the children who must cross the street in order to walk to and from school. As new schools open, they are evaluated to determine the need for crossing guards. For the past several years, the unit has added new crossing guards each year to ensure the safety of children attending Gwinnett County Public Schools.



Major Tom Doran
Commander

SWAT Team

Major Tom Doran, Commander

Formed in 1987, the **Gwinnett County Police Department SWAT Team** consists of 57 individuals who are highly trained in tactics to counter the threat posed by well-armed barricaded suspects. The presence of a highly-trained and skilled police tactical unit has been shown to substantially reduce shooting incidents and reduce the risk of injury or loss of life to innocent citizens, police officers, and suspects.

The mission of the Gwinnett County Police SWAT Team is to provide a highly-trained and skilled tactical team as a resource for the Gwinnett County Police Department in the handling of critical incidents in order to reduce the risk of injury or loss of life to citizens, police officers, and suspects.

The SWAT Team is divided into several smaller units, Command and Control (two members), the Crisis Negotiation Team (12 members), Entry/Containment and Sniper (33 members), Tactical Support (five members), and the Explosive Ordinance Disposal Team (five members). Currently the SWAT Team is a collateral team with all members of the SWAT Team assigned to other full-time duties within the Police Department when not on SWAT calls or in training. During 2009, leadership of the SWAT Team consisted of the following:

- SWAT Team Commander: Major Tom Doran
- Assistant SWAT Team Commander: Lt. Greg Adams
- Tactical Team Leader: Lt. J.D. McClure
- Sniper Team Leader: Sergeant Jason Teague
- Crisis Negotiations Team Leader: Sergeant Scott Nealy
- EOD Team Commander: Lieutenant William Walsh

During 2009, the SWAT Team responded to 13 barricaded suspect/hostage incidents, seven high-risk warrant services, two VIP protective details, and 10 security escorts. The EOD Unit responded to 46 bomb/explosives activations.



criminal investigations division

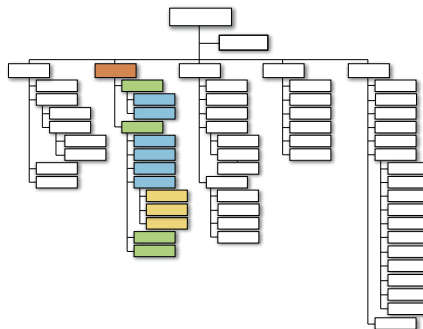


Assistant Chief Dan Bruno
Commander



Major K. Moran
Commander

The **Criminal Investigations Division** includes three sections: Criminal Investigations Section, Special Investigations Section, and the Crime Scene Investigations Unit. The Criminal Investigations Division is committed to effectively and efficiently investigating crimes in Gwinnett County, improving the lives of innocent citizens, and promoting a safer community.



Criminal Investigations Section

Major K. Moran, Commander

The **Criminal Investigations Section (CIS)** is comprised of seven units divided into the Crimes Against Persons and Property Crimes Units. Crimes Against Persons includes the Homicide, Robbery, and the Special Victims Units. Property Crimes include the Motor Vehicle Theft Unit, Burglary Unit, General Crimes Unit, and the Electronic and Financial Crimes Units.

In 2009, CIS supervisors assigned 5,605 cases for follow-up investigation. During the year, 540 cases were unfounded, 521 cases were exceptionally cleared, and 1,560 cases were cleared by arrest. This is a six percent increase in arrests compared to 2008 and a 25 percent increase in arrests compared to 2008.

Crimes Against Persons:

Homicide Unit

Sergeant E. Restrepo and Sergeant S. Shaw

The **Homicide Unit** consists of two sergeants and seven investigators. They primarily work adult felony crimes against persons: murders, assaults, kidnappings, missing persons, suspicious deaths, and the use of deadly force by or on police officers. During 2009, these officers investigated 35 homicides. The unit was responsible for a large-scale investigation involving a Hispanic organized crime group composed of predominately Dominican males. The group was responsible for multiple homicides, robberies, kidnappings, and drug trafficking. The task force was extremely successful, and from their success, Sergeant Restrepo was selected as Gwinnett County's Officer of the year and the County's Public Safety Person of the Year for 2009.



police annual report • 2009

Cold Case Unit

Corporal G. Lorenzo

The **Cold Case Unit** consists of one corporal and one investigator. They primarily work felony crimes against persons cases that remain unsolved for over one year. During 2009, these officers were successful in solving several homicides. The majority of these cases were committed by MS-13 gang members. These cases were ultimately prosecuted federally.

Robbery Unit

Sergeant J.P. Wilbanks

The **Robbery Unit** consists of one sergeant and seven investigators that address armed robberies, robberies by sudden snatch, carjacking, robberies by intimidation, and home invasions. They also frequently assist the Homicide Unit. There were 1,054 robberies, 718 cases were assigned, and 167 cases were cleared by arrest in 2009.

Special Victims Unit

Sergeant C. Rafanelli and Sergeant S. Killian

The **Special Victims Unit (SVU)** has two sergeants and 11 investigators. The unit investigates all crimes of a sexual nature including, but not limited to, rape, sexual battery, sodomy, and indecent exposure. The unit also investigates all cases involving sexual or physical abuse of children under the age of 17 and adults over the age of 65. They also investigate and locate runaways. The unit maintains close relationships with the Department of Family and Children Services, the Gwinnett Sexual Assault Center, and the Gwinnett School System. During 2009, SVU investigated approximately 1,288 cases, and 274 cases were cleared by arrest.

Property Crimes:

Burglary Unit

Sergeant C. Atwater and Sergeant T. Sage

The **Burglary Unit** has two sergeants, nine investigators, and one full-time criminal investigative assistant. The unit is responsible for the investigation of residential and commercial burglaries. There were 5,265 burglaries during 2009. The unit assigned 1,059 cases to detectives for investigation and 377 cases were cleared by arrest. The unit is also responsible for regulating pawnshops located in Gwinnett County. During 2009, there were 286,668 pawn transactions in the county. The Pawn Unit located 579 stolen items valued at \$171,224.

Electronic and Financial Crimes Unit

Sergeant J. Saffen and Sergeant D. Ponder

The **Electronic and Financial Crimes Unit** consists of two sergeants, seven investigators, two computer forensic investigators, and two civilian aides. The investigative side of the Electronic and Financial Crimes Unit is responsible for all white collar thefts such as forgery, identity theft,





credit card fraud, insurance fraud, mortgage fraud, counterfeit currency, embezzlement, and theft by deception. The computer forensic investigators are responsible for securing, imaging, and recovering all digital evidence. This is done in a forensically-sound manner using the latest hardware and software that is available. The two investigators also maintain and utilize the department's audio visual lab.

The Electronic and Financial Crimes Unit assigned 827 cases for investigation. Out of these cases, 232 were cleared by arrest. The Computer Forensic Lab processed 72 different storage devices and recovered 14,421,750 image files and 53,459,343 data files.

General Crimes Unit

Sergeant A. Skelly and Sergeant F. Moore

The **General Crimes Unit** has two sergeants and six investigators. They are responsible for conducting investigations involving large-scale theft, property damage, terrorist threats, entering autos, and other crimes as assigned. They assigned 715 cases of which, 289 cases were cleared by arrest.

Motor Vehicle Theft Unit

Sergeant T. Conlon

The **Motor Vehicle Theft Unit** consists of one sergeant, four investigators, and two criminal investigative assistants. It is responsible for conducting investigations involving the theft of motor vehicles, motorcycles, motorized construction equipment, aircraft, and farm equipment. There were a total of 1,756 motor vehicle thefts in 2009. The unit assigned 570 cases and cleared 123 cases by arrest.

This unit is also responsible for regulating auto salvage and towing services located within Gwinnett County. The unit maintains a close working relationship with the National Insurance Crime Bureau.

Crime Scene Investigations Unit

Manager Nancy Jenkins

The **Crime Scene Investigations Unit (CSI)** consists of one manager, three supervisors, and 14 crime scene specialists. CSI is responsible for providing scientific investigative services to all branches of the Gwinnett County Police Department and any outside police agency such as city police departments requesting such services. Its purpose is to also provide photographic processing for the Police Department and other branches of the County government at the discretion of the Chief of Police. In addition, CSI maintains a forensic laboratory for processing and analyzing evidence and performing marijuana drug identification. CSI personnel maintain a database of prisoner mug shots for compiling photo lineups and maintain fingerprint arrest cards for fingerprint comparisons. The Automated Fingerprint Identification System is located in the CSI Unit, where specially-trained personnel enter unknown latent fingerprints recovered from crime scenes and search the fingerprint arrest database maintained by the Georgian Bureau of Investigations for investigative leads.





police annual report • 2009

During 2009, the CSI Unit processed 672 crime scenes, assisted on 142 additional crime scenes, processed 174 motor vehicles, and responded to 174 after-hour call-outs and 68 call-outs to assist other agencies. The unit also lifted 1,003 latent fingerprints, conducted 2,390 fingerprint comparisons with 121 positive comparisons, prepared 216 photo lineups, developed 3,906 rolls of film, completed 266 evidence processing requests, and performed 1,595 marijuana tests.



Major J. Strickland
Commander

Special Investigations Section

Major J. Strickland, Commander

The **Special Investigations Section (SIS)** has six units including the Narcotics Unit, Alcohol and Vice Unit, Technical Unit, Highway Interdiction Team/Commercial Vehicle Enforcement, Intelligence Support Operations Unit, and the Crime and Intelligence Analysis Unit. In 2009, SIS investigators seized illegal narcotics with a street value of \$46 million and made 947 criminal charges.

The staff includes one major; one staff assistant, two lieutenants, seven sergeants, 11 corporals, 20 investigators, six crime analysts, and four research analysts.

Vice and Alcohol Enforcement Units

Lieutenant J. Fetner
Sergeant Chris Fish

The **Alcohol Enforcement Unit** is responsible for ensuring compliance with the Gwinnett County *Alcoholic Beverage Ordinance* with one investigator dedicated to compliance. The unit also works closely with state and federal agencies and local licensing/revenue departments to ensure compliance with laws dealing with alcohol. During 2009, the unit conducted 1,858 alcohol inspections and issued 199 citations for alcohol-related offenses.

The Vice Unit has two corporals and two investigators who are responsible for investigating crimes of moral turpitude such as, but not limited to, prostitution, gambling, obscenity, and solicitation. During 2009, the Vice/Alcohol Unit made 529 charges. The Vice Unit investigators also actively handle narcotics investigations.

Intelligence Support Operations Crime and Intelligence Unit

Lt. Steve White

In 2009, **Intelligence Support Operations** and the **Crime and Intelligence Analysis Unit** were combined to enhance the collection and sharing of information. The Intelligence Unit has one sergeant, one corporal, and four investigators. The unit is responsible for collecting information about individuals or groups to anticipate, prevent, or monitor criminal activity. This unit maintains intelligence files on the activities and associates of organizations, businesses, groups, or individuals that are suspected of being, or having been, involved in the actual or attempted planning, organizing, financing, or commission of criminal activities with known or suspected crime figures. Investigators involved in both internal and external investigations as well as local and federal utilize this information. The investigators assigned to this unit actively assist all of the units in SIS with their investigations.



A forfeiture investigator is assigned to this unit. This investigator collects and submits required documentation during asset forfeiture proceedings in Superior Court. In 2009, this investigator processed the successful seizure of \$450,489 in vehicles, currency, and personal property of criminals.

The Crime and Intelligence Analysis Unit has one sergeant, six crime analysts, and four research analysts. The unit is responsible for collecting and analyzing crime and incident data in an effort to identify crime patterns and trends.

Crime Analysis Unit Accomplishments 2009

Over the course of 2009, the crime analysts created 76 Gwinnett County Police Department Be on the Look Outs and handled 332 public information requests. Crime Analysis staff also spent approximately 450 hours in training, 615 hours processing Open Records requests, and approximately 690 hours preparing for COMPSTAT meetings. The crime analysts entered 18,538 reports into the records management system. The reports entered included 3,980 entering automobile, 3,518 residential burglaries, 4,509 motor vehicle theft and recoveries, and 1,200 commercial burglaries.

Joint Terrorism Task Force

Lieutenant S. White

The **Joint Terrorism Task Force (JTTF)** is a partnership between various law enforcement agencies that is charged with taking affirmative action against terrorism. The mission of the Atlanta Division JTTF is to identify and neutralize any terrorist activity directed against the citizens of the United States, particularly in the state of Georgia. The JTTF conducts investigations of both domestic and international terrorist groups.

The Atlanta JTTF is an FBI-led, multi-agency task force consisting of 22 federal, state, and local law enforcement agencies. The Gwinnett County Police Department participates in the Atlanta-area JTTF and has an officer assigned full-time to work in conjunction with this federal task force. These arrangements have fostered a collaborative environment that ensures efficient and effective intelligence sharing and timely lead development.

Highway Interdiction Team / Commercial Vehicle Enforcement Unit

Lieutenant J. Fetner

Sergeant Jim Price and Sergeant Collin McClendon

In 2009, the **Highway Interdiction Team (HIT)** was formed in an effort to interdict and combat the flow of illegal drugs through the county. The HIT combined with the Commercial Vehicle Enforcement Unit, and together, they are responsible for uniform drug interdiction. Their primary functions are traffic stops; however, they also assist other units within Special Investigations when a uniform presence is needed. The Commercial Vehicle Enforcement Unit is specifically responsible for enforcing Federal Motor Vehicle Carrier Regulations and Georgia Traffic Law pertaining to Commercial Motor Vehicles.

In 2009, the combined unit conducted over 5,200 traffic stops, inspected 272 commercial vehicles, and issued over 2,000 traffic citations.



police annual report • 2009

Narcotics Unit

Lieutenant Jay Fetner

The **Narcotics Unit's** primary responsibility is to investigate violations of the Georgia *Controlled Substances Act*. Investigations are both short-term, or street-level, and long-term, or involving criminal organizations conspiracies, etc. The unit currently has one lieutenant, two sergeants, four corporals, and 11 investigators.

During 2009, the Narcotics Unit investigated 147 new cases and made 380 drug-related arrests. Investigators seized the following illegal substances in 2009:

Case Type	Grams/# Pills	Pounds	Retail Value of Unit (\$)	Number of Arrests
Marijuana	3,937,563	8680	\$39,375,633	155
Powder Cocaine	62,092	136	\$6,209,259	111
Crack Cocaine	141	.31	\$14,138	20
Methamphetamine	8,306	18	18	50
Heroin	.5	0	\$100	1
LSD	14	-	0	1
Ecstasy (pills)	4,406	-	\$88,122	12
Perscription Pills	699	-	\$6,990	27
Steroids	0	0	0	0
GHB/GBL	74	-	\$370	3
Other Cases	0	0	0	0
Totals	N/A	N/A	\$46,525,300	380



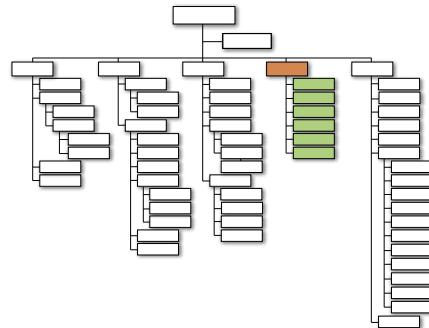
support operations division



Asst. Chief Mike Reonas
Commander

The **Support Operations Division** is responsible for providing necessary support to all divisions within the Gwinnett County Police Department and ensuring that police services are delivered to the public in a timely and effective manner.

The Division is comprised of 911/Communications, Records/GCIC, Property and Evidence Unit, Animal Welfare and Enforcement, Facilities/Fleet Operations, Lobby Officer, and the Tele-Serve Unit.



Animal Welfare and Enforcement Section

Mary Lou Respess, Manager

Gwinnett County **Animal Welfare and Enforcement Section (AWES)** currently has 33 positions. There are 28 AWES employees who are trained, knowledgeable officers responsible for the County ordinances dealing with the welfare of animals. There are four AWES supervisors who oversee the operation of the kennel, road, and office and whose primary function is to protect the health and safety of the animals and citizens of Gwinnett County.

The AWES officers remove stray animals from county streets and public areas, quarantine animals suspected of rabies, supply temporary housing for stray and unwanted animals, and conduct education classes at the shelter and in schools.

There are four clerical assistants who process adoptions for unwanted and stray animals, return lost pets to owners, and provide public-oriented customer service.

During 2009, AWES officers handled 11,383 animals. Of those handled, 927 were returned to their owners, 2,093 were adopted, 1,071 were rescued from the shelter, and seven were reported to have rabies.

The shelter collected \$121,674 in impound, board, adoption, and owner abandonment fees.

Gwinnett County AWES information and pictures of animals available for adoption are posted on www.gwinnettcountry.com.



911/Communications Center

Angie Conley, Communications Manager

The **911/Communications Center** receives calls from the public and dispatches equipment and personnel. Duties within the center fall into three areas: call taking, police dispatch, and Fire and EMS dispatch.

The center employs 89 communications officers, nine senior communications officers, three watch supervisors, and one manager. Communications officers are certified by the Georgia Peace Officers Standards and Training Council to be emergency medical dispatchers, allowing them to provide medical information and instructions prior to the arrival of EMS personnel.

The Gwinnett County Police Department conducts a 160-hour course for communications officers, which exceeds the 40 hours required by the state.

Calls Activity 2009	Number
911 Calls received	462,051
Administrative/non-emergency (incoming)	268,423
Calls dispatched (Police)	869,412
Calls dispatched (Fire and Emergency Services)	69,899
Administrative/non-emergency (outgoing)	178,901

Facilities/Fleet Operations Management

Tom Medley, Operations Manager

The **Operations Management Unit** is responsible for fleet operations, facility repairs and maintenance, and all construction-related projects. The Police Department has 12 facilities including the County headquarters, headquarters annex, five precincts, animal control, training academy, aviation hanger, Park Police, and the K-9 facility.

Facilities/Fleet Operations Accomplishments 2009

- Completed the Police Annex facility located on Hi-Hope Road

Lobby Officers

Lobby officers enhance the safety and security of the work environment for members of the Police Department and visitors to headquarters.

Tele-Serve Unit

Sergeant Jay Parish

The **Tele-Serve Unit** consists of four tele-serve operators and one supervisor. The unit's responsibility is to construct police reports by speaking with citizens over the telephone. This eliminates the need for zone cars to be dispatched to calls generally considered informational or for reports that usually require no investigative follow-up. In 2009, the unit handled 18,386 calls and completed 7,777 reports.



Property and Evidence Unit

Sergeant Laura Bardugon

The **Property and Evidence Unit** personnel are responsible for accepting, releasing, and maintaining property and evidence under agency control in a safe and secure manner. In 2009, the unit managed the intake of over 14,000 new evidentiary items while also disposing of 19,431 evidentiary items released by the courts.

The unit has seven full-time positions: a sergeant, a senior evidence technician, four evidence technicians, and a crime and intelligence analyst. All property and evidence personnel are members of the International Association of Property and Evidence, Inc. (IAPE) and all have received training and are certified as property and evidence specialists through IAPE.

Records/GCIC Section

Cynthia Koskela, Manager

The **Records Section** employs two switchboard operators, 25 records technicians, and three supervising records technicians. This unit enters data into a police-information computer system and tracks, files, and retrieves traffic citations, original police incidents, accidents, and arrest reports. The unit also distributes reports and citations to the courts for prosecution. All Uniform Crime Reports/Part One crimes are reported from this unit. The process of expunging criminal arrests is also handled by the records manager.

The Georgia Crime Information Center (GCIC)/National Crime Information Center (NCIC) Unit enters information on missing persons or stolen property into the GCIC and NCIC databases. This unit, with 10 technicians and a supervisor, helps officers apprehend criminals, return stolen property to the rightful owners, and reunite missing persons with their families.



Edward Restrepo
Sergeant

Officer of the Year 2009

Edward Restrepo, Sergeant

In May 2009, **Sergeant Restrepo** was chosen to lead a task force of investigators from multiple specialized units. This task force identified members of a Dominican organized crime operation. The diligence and perseverance of the task force resulted in 25 arrests of members of this criminal enterprise. They were found to be responsible for crimes involving homicide, kidnapping, conspiracy to commit armed robbery, and drug trafficking. The outstanding work of this task force ultimately prevented a countless number of other violent crimes.



Amber Cook
Criminal Analyst

Civilian of the Year 2009

Amber Cook, Criminal Analyst

Amber Cook's dedication and skill were instrumental in helping to solve numerous violent armed robberies throughout the metropolitan Atlanta area. In 2008 and 2009, due to her thorough research, she was able to identify several possible suspects in a series of armed robberies of Asian restaurants. Her diligence in contacting the appropriate units of the Gwinnett County Police Department and local law enforcement agencies to share the information she had gathered led to multiple arrests.



police annual report • 2009

Officers/Civilians of the Month 2009

Month	Officer	Civilian
January	PO Sr. N. H. Boney #1037	CO I Brandy Jones
February	PO Sr. J. P. Presley #064	CEO Chris Hachat #CEI7
	PO Sr. N. H. Boney #1037	
	PO Sr. R. B. Dantzler #1140	
	PO Sr. C. J. Lymber #1075	
	PO Sr. B. I. Ervin #1067	
	PO Sr. G. K. Heller #1213	
March	Sgt. W. B. Barnhart #701	CSS I Kari Carpenter CSI
April	Sgt. J. P. Wilbanks #623	Analyst Amber Cook
	Sgt. T. E. Williamson #431	
	Sgt. S. R. Brustein #551	
	Cpl. J. Johnson #582	
	Det. C. L. Reider #797	
	PO Sr. E. T. Fee #952	
	PO Sr. G. M. Gallant	
	PO Sr. L. C. Fazenbaker #918	
	PO Sr. A. E. Cefali #981	
	PO Sr. J. E. Jaster #1047	
	PO Sr. P. E. Dunning #865	
	PO Sr. E. L. Charron #949	
	PO Sr. T. Werho #1012	
May	PO Sr. S. H. Rountree #995	CO IV Leslie Leatherwood
June	PO Sr. M. J. Bonanno #892	ACO James Myers
July	PO Sr. B. P. Kelly #897	CO II Terri Butler



August	PO Sr. K. M. Bradley #568	CO IV Amanda Boring
		CO II Sherricka Hudson
		CO II Cassandra Ramos
September	Sgt. E. E. Restrepo #572	CO III Crystal Lewis
		CO III Pamela Papandrea
		CO III Toni Wyman
		CO II Rachel King
		CO II Susan Sanders
		CO II Latosha Smiley
		CO II Connaka Brown
		CO I Anne Ivey
		CO I Yamileh Marcellus
		CO I Crystal Mercado
		CO I Neomi Sanshez
October	Sgt. J. W. Redmond #503	CEO II James Smith
	PO Sr. J. L. Dickerson #1004	
	PO Sr. P. E. Dunning #865	
	PO Sr. E. Gurley #814	
	PO Sr. S. M. Starnes #998	
	PO Sr. J. T. Tait #1056	
	PO N. H. Dass #1332	
November	Sgt. C. A. Smith #719	Analyst Rachel Brookins
	PO Sr. E. T. Fee #952	
	PO Sr. G. M. Gallant #1019	
	PO Sr. E. Gurley #814	
	PO Sr. T. D. Werho #1012	
December	Sgt. E. S. Osterberg #545	CO II Latosha Smiley
	PO Sr. M. Dvizac #1208	
	PO Sr. D. L. Maffett #971	
	PO Sr. J. L. Dickerson #1004	
	PO Sr. A. C. Hollifield #1216	
	PO Sr. J. J. Smith #1252	



police annual report • 2009

Promotions 2009

Employee	Promoted to:	Effective Date
Cpl Mark Essex	Sergeant	02.07.09
PO Sr. Michele Pihera	Corporal	
PO Sr. Jonathan Gollither	Corporal	
Cpl Anthony Sutton	Sergeant	03.07.09
PO Sr. Brooks Harter	Corporal	
CEO I Derek Aycart	CEO II	04.04.09
CEO I David Harter	CEO II	
CEO I William Hicks	CEO II	
CEO I Larry Johnson	CEO II	
CEO I James Smith	CEO II	
Lt. Kevin Moran	Major (Appointment)	05.30.09
Lt. Thomas Doran	Major (Appointment)	09.19.09
Lt. Dennis Spradley	Major (Appointment)	
Sgt. Marcus Head	Aviation Mgr (Appointment)	
Sgt. James Adams	Lieutenant	
Sgt. Hansel Barber	Lieutenant	
Sgt. Curtis Clemons	Lieutenant	
Sgt. Alan Hutcherson	Lieutenant	
Sgt. James McClure	Lieutenant	
Sgt. Roger Nelson	Lieutenant	
Sgt. Sandra Pryor	Lieutenant	
Sgt. Timothy Smith	Lieutenant	
Sgt. Roy Smith	Lieutenant	
Sgt. Charles Spell	Lieutenant	
Cpl. Scott Autrey	Sergeant	
Cpl. Scott Barrett	Sergeant	
Cpl. Michael Carr	Sergeant	



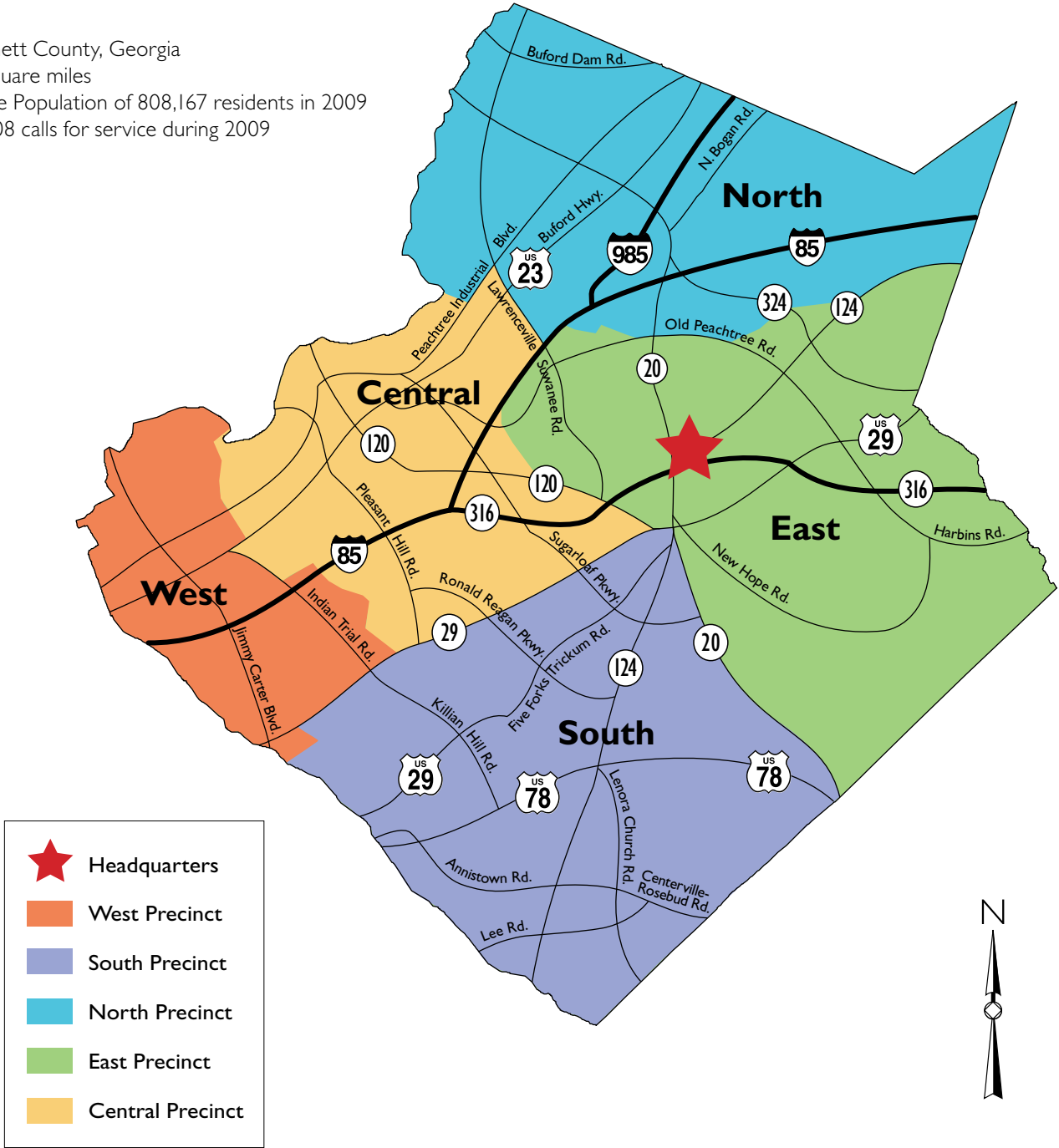
Cpl. Jeffrey Johnston	Sergeant	
Cpl. Kristy Llewellyn	Sergeant	
Cpl. Donald Merchant	Sergeant	
Cpl. William Newman	Sergeant	
Cpl. Eric Osterberg	Sergeant	
Cpl. Timothy Sage	Sergeant	
Cpl. Christina Schiralli	Sergeant	
Cpl. Illana Spellman	Sergeant	
Cpl. James West	Sergeant	
Cpl. Myron West	Sergeant	
Cpl. Charles Wilkerson	Sergeant	
Sandi Spain	CSS III	07.11.09
Cpl. Michael Marchese	Sergeant	12.12.09
PO Sr. Christian Adams	Corporal	
PO Sr. Gregory Behlmann	Corporal	
PO Sr. Michael Bianchi	Corporal	
PO Sr. Michael Blute	Corporal	
PO Sr. Tommy Braswell	Corporal	
PO Sr. Matthew Brookins	Corporal	
PO Sr. Eric Charron	Corporal	
PO Sr. Brian Doan	Corporal	
PO Sr. Jose Dominguez	Corporal	
PO Sr. Kenneth Everson	Corporal	
PO Sr. Elbert Gurley	Corporal	
PO Sr. Charles King	Corporal	
PO Sr. Stephen Land	Corporal	
PO Sr. Kevin Moller	Corporal	
PO Sr. Marco Ricciardi	Corporal	
PO Sr. Larry Stone	Corporal	



police annual report • 2009

Appendix A Gwinnett County Police Precincts

Gwinnett County, Georgia
 437 square miles
 Service Population of 808,167 residents in 2009
 644,708 calls for service during 2009





Appendix B

Crime Data: Uniform Statistics

Year	Calls		Auto Accident Data			
	Traffic	General	Accidents	Fatalities	Injuries	DUI Arrests
2009	211,497	529,829	23,103	51	3,988	1,953
2008	192,095	532,440	24,971	53	3,906	1,786
2007	184,076	466,767	29,603	65	3,833	1,406
2006	149,241	360,690	29,030	83	4,260	2,132
2005	140,657	373,813	29,734	81	4,417	2,487
2004	159,754	359,362	28,220	79	4,196	2,903
2003	147,819	331,035	26,428	68	3,411	2,107
2002	155,861	319,121	24,973	63	3,974	3,023
2001	141,619	302,040	25,002	69	4,130	3,050
2000	143,237	276,372	24,280	64	4,020	2,790

Appendix C

Part I Crimes/Statistical Data

Crime	2000	2001	2002	2003	2004	2005	2006	2007	2008	2009
Murder	20	16	16	35	30	31	36	42	33	35
Rape	128	93	91	140	159	149	112	89	125	141
Robbery	404	592	580	613	745	879	940	1286	1,246	1,077
Aggravated Assault	537	594	595	543	673	722	759	761	694	638
Total	1,089	1,295	1,282	1,331	1,607	1,781	1,847	2,178	2,098	1,891
Burglary	2,477	3,331	3,342	3,924	4,421	5,106	5,557	5,544	5,778	5,431
Theft	9,648	9,705	9,731	9,393	10,948	11,407	12,843	9,815	6,346	6,442
Auto Theft	1,703	1,712	1,664	2,078	2,559	2,786	2,853	2,517	2,086	1,828
Total	13,828	14,748	14,737	15,400	17,928	19,299	21,253	17,876	14,210	13,701
Crime Rate Population/ Statistical Population*	462,932	517,409	541,056	575,588	592,837	617,088	639,713	659,895	677,809	693,850
Authorized Strength	494	520	520	560	596	657	662	700	729	741
Officers/1,000 Popula- tion*	1.07	1.01	.96	.97	1.00	1.06	1.03	1.06	1.07	1.06
Violent Crimes/ 1,000 Population*	2.35	2.50	2.37	2.31	2.71	2.89	2.89	3.30	3.1	2.7

* Years prior to 2007 used total population rather than Crime Rate Population / Statistical Population. As a result, figures in the years 2007 and later vary slightly.



police annual report • 2009

Appendix D

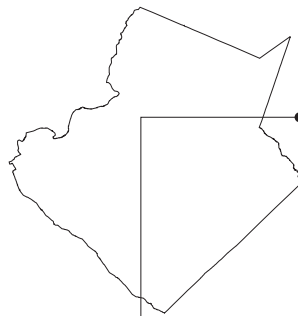
Budgeted Funds 1999 – 2009

Year	General Fund	911 Fund	SOA Fund	Total
1999	35,262,514	4,632,756	258,468	40,153,738
2000	38,214,452	5,584,376	414,721	44,213,549
2001	42,653,445	6,986,402	331,946	49,971,793
2002	47,862,896	6,326,329	666,446	54,855,671
2003	51,696,674	7,754,256	350,411	59,801,341
2004	57,965,201	8,470,667	441,271	66,877,19
2005	62,604,636	14,870,693	893,466	78,373,795
2006	65,658,237	11,208,750	1,006,491	77,873,478
2007	75,982,294	9,405,489	1,576,537	86,964,320
2008	85,283,853	12,405,518	1,552,970	99,242,341
2009	79,801,515	11,186,637	1,977,847	92,965,999

Appendix E

Personnel Allocations 1999 – 2009

Year	Sworn	Non-Sworn	Total	Turnover		Hired	
				Sworn	Non-Sworn	Sworn	Non-Sworn
1999	477	227	704	38	38	56	65
2000	494	230	724	35	50	60	35
2001	520	242	762	32	26	71	35
2002	520	246	766	35	25	45	47
2003	560	250	810	36	30	47	34
2004	596	261	857	49	43	53	25
2005	657	270	927	46	28	81	68
2006	662	289	951	36	36	127	48
2007	700	313	1,013	58	40	93	109
2008	695	290	985	83	53	91	64
2009	674	275	949	65	52	69	28



prepared by:
The Gwinnett County
Police Department

data compilation:
Police Services

editing:
Corporal Brian **Kelly**, Police
Communications Division Staff

layout and design:
Communications Division



cover photograph:
Communications Division

gwinnettcounty

75 Langley Drive
Lawrenceville, GA 30046

www.gwinnettcounty.com